

# **Retro Fit Outdoor Wheel Kit Instructions**





## Table of Contents

EXTENSION LADDERS	
Extension Ladders - Standard (FED) <b>p.3-5</b>	Extension Ladders with Terrain Master (FED-AT/FED-FC) <b>p.6-8</b>

STEP PLATFORM LADDERS		
Step Platform Ladders - Standard (FPL/FPW)		Step Platform Ladders with All Terrain (FPL-AT) <b>p.15-17</b>
FPL/FPW 0.6-1.8 <b>p.9-11</b>	FPL/FPW 2.1 - 3.6 <b>p.12-14</b>	



## User Instructions

- Fit the kit according to these instructions.
- Obey weight limit on accessories.
- Double check all locking mechanisms during assembly stages.
- Always remove accessories before transport.
- Isolate work area to avoid trip hazards and Fall hazards.

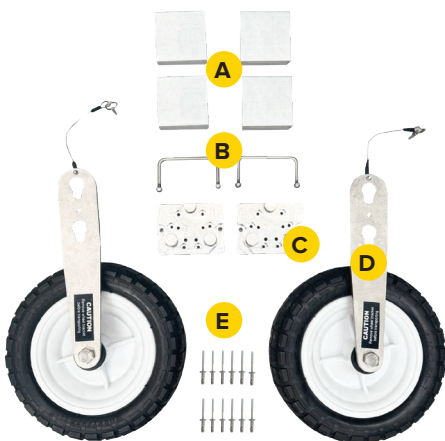
# Retro Fit Outdoor Wheel Kit Setup

## Outdoor Wheel Kit Glossary

- A** 4 x Stile connector plates
- B** 2 x Stainless Steel U-Bolts  
2 x Stainless Steel M6 Nyloc Nuts.
- C** 2 x Wheel Mount Brackets
- D** 2 x Outdoor Wheel Assembly
- E** 12 x (BP -RIV-0083) Rivets

### Required for installation

- 1** Torque Wrench (9Nm)
- 2** Ruler (150 mm)



**Note:** Can be installed on either the left or right side – no specific orientation required.

# Retro Fit Outdoor Wheel Kit

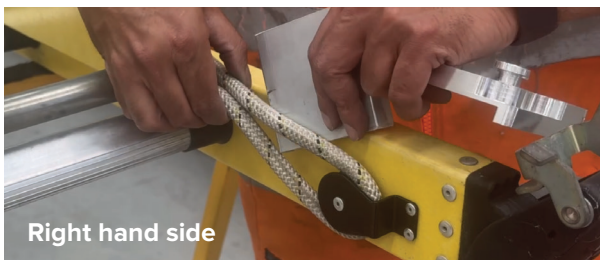
## EXTENSION LADDERS - STANDARD



Tools required: Torque wrench, 10mm socket

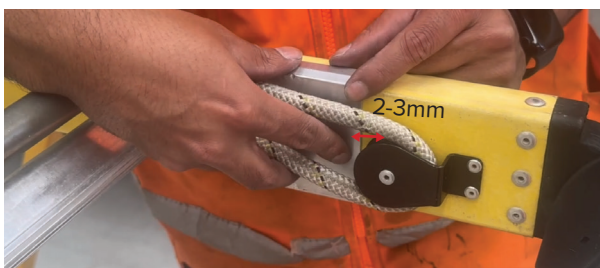
### Installing Brackets on the bottom of the Base

- Open the fly one rung up
- **Place the Stile Adaptor Plate:** Set the stile connector plate in between the rope and the inside of the stile.
- Get the second plate and slot it in.



#### Alignment

- Align 2-3mm away from the black pulley.



- **Prepare the U-Bolts:** Remove the two nuts from each U-bolt to prepare them for installation.
- **Insert the U-Bolts:** Push a U-bolt through the back of the bracket, ensuring it passes all the way through.

## Retro Fit Outdoor Wheel Kit

### EXTENSION LADDERS - STANDARD

- Fit the bracket on top of the connector plate.



**Note:** Before tightening allow 100mm gap.

- **Secure with Nuts:** Wind the nuts onto the U-bolt and tighten them using torque wrench 9Nm to secure the bracket in place.



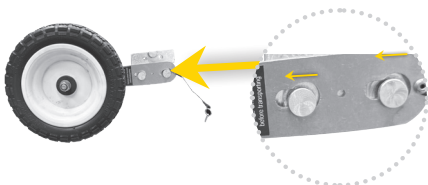
- **Check Alignment:** Ensure the bracket is flush with the stile connector, with no gaps visible.
- **Final Tightening:** Tighten the nuts completely to secure the bracket in place.
- **Repeat on the Opposite Side:** Follow the same steps to install the bracket on the other side of the ladder.

# Retro Fit Outdoor Wheel Kit

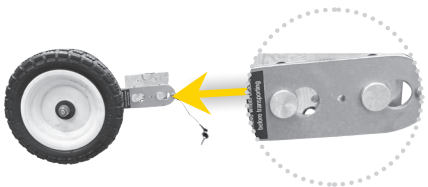
## EXTENSION LADDERS - STANDARD

### Mounting the wheel to the ladder

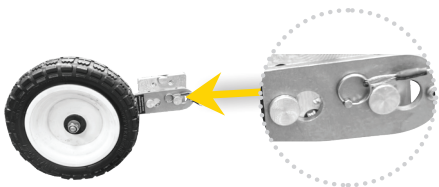
- Place the wheel bracket within the two slots.



- Slide it all the way in until it sits flush on the narrow slots.



- Insert the dent pin to lock it into position.



### Usage/Application



### Storage



**Warning:** Remove the wheel assembly before transporting,



# Retro Fit Outdoor Wheel Kit

## EXTENSION LADDERS - WITH TERRAINMASTER



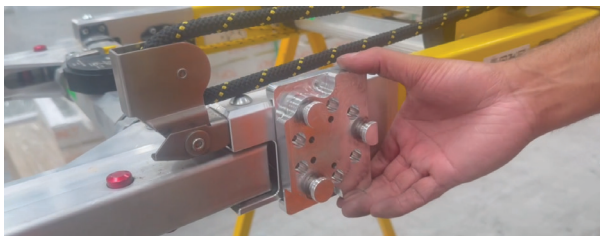
Tools required: Torque wrench, 10mm socket

### Installing Brackets on the bottom of the base with TerrainMaster

- Open the fly one rung up

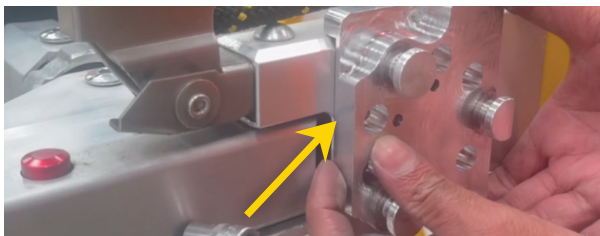


- **Align the Bracket:** Position the bracket on the stile connector of the ladder so that it wraps around and envelops the TerrainMaster.



### Alignment

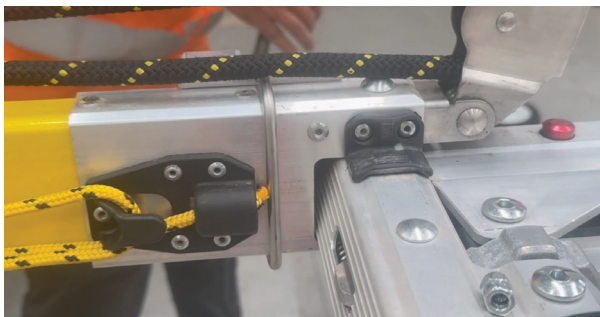
- Align the edge of the bracket with the undercut of the stile connector.



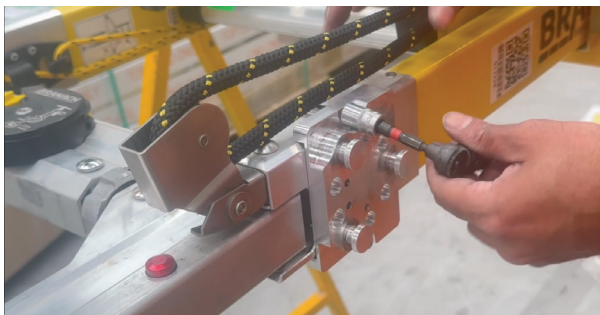
## Retro Fit Outdoor Wheel Kit

### EXTENSION LADDERS - WITH TERRAINMASTER

- **Prepare the U-Bolts:** Remove the two nuts from each U-bolt to prepare them for installation.
- **Insert the U-Bolts:** Push a U-bolt through the back of the bracket, ensuring it passes all the way through.



- **Secure with Nuts:** Wind the nuts onto the U-bolt and tighten them using torque wrench 9Nm to secure the bracket in place.



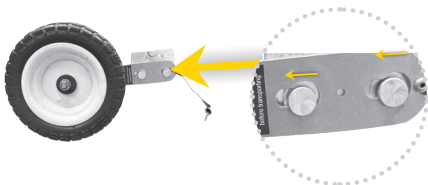
- **Check Alignment:** Ensure the bracket is flush with the stile connector, with no gaps visible.
- **Final Tightening:** Tighten the nuts completely to secure the bracket in place.
- **Repeat on the Opposite Side:** Follow the same steps to install the bracket on the other side of the ladder.

# Retro Fit Outdoor Wheel Kit

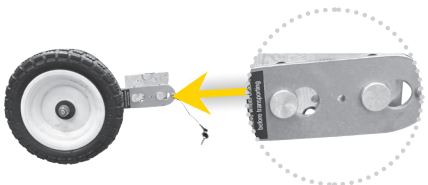
## EXTENSION LADDERS - WITH TERRAINMASTER

### Mounting the wheel to the ladder

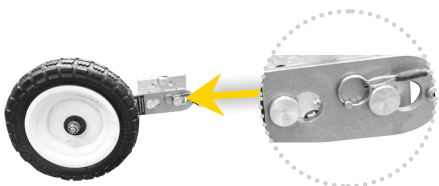
- Place the wheel bracket within the two slots.



- Slide it all the way in until it sits flush on the narrow slots.



- Insert the dent pin to lock it into position.



### Usage/Application



### Storage



**Warning:** Remove the wheel assembly before transporting,

# Retro Fit Outdoor Wheel Kit

## STEP PLATFORM LADDERS - STANDARD

(FPL/FPW 0.6 - 1.8)



Tools required: Torque wrench, 10mm socket

### Installing Brackets on the Rear Section of the Platform

- **Align the Bracket:** Position the bracket on the rear section of the platform so that it wraps around and envelops the stile.



- **Place the Stile Adaptor Plate:** Set the stile adaptor plate on top of the wheel mount bracket, ensuring the single slot on the bracket faces upward.
- **Prepare the U-Bolts:** Remove the two nuts from each U-bolt to prepare them for installation.

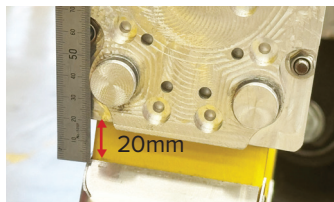
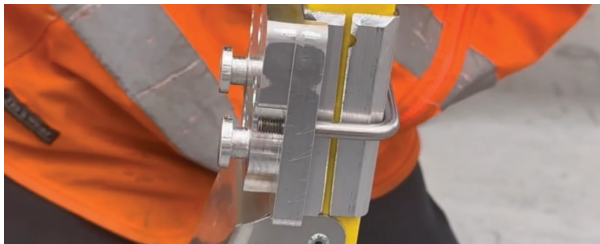


## Retro Fit Outdoor Wheel Kit

### STEP PLATFORM LADDERS - STANDARD

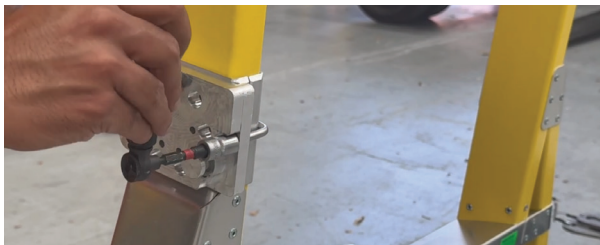
(FPL/FPW 0.6 - 1.8)

- **Insert the U-Bolts:** Push a U-bolt through the back of the bracket, ensuring it passes all the way through.



**Note:** Before tightening allow 20mm gap.

- **Secure with Nuts:** Wind the nuts onto the U-bolt and tighten them using torque wrench 9Nm to secure the bracket in place.



- **Check Alignment:** Ensure the bracket is flush with the stile connector, with no gaps visible.
- **Final Tightening:** Tighten the nuts completely to secure the bracket in place.
- **Repeat on the Opposite Side:** Follow the same steps to install the bracket on the other side of the platform.

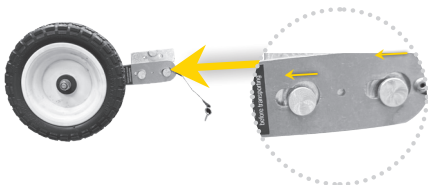
# Retro Fit Outdoor Wheel Kit

## STEP PLATFORM LADDERS - STANDARD

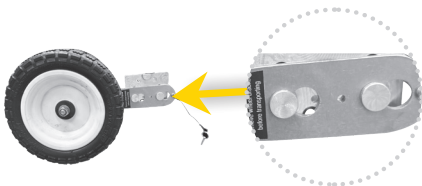
(FPL/FPW 0.6 - 1.8)

### Mounting the wheel to the ladder

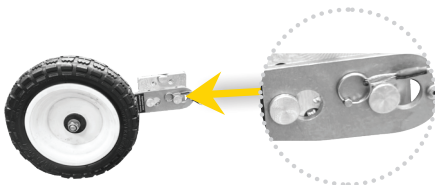
- Place the wheel bracket within the two slots.



- Slide it all the way in until it sits flush on the narrow slots.



- Insert the dent pin to lock it into position.



### Usage/Application



### Storage



**Warning:** Remove the wheel assembly before transporting,

# Retro Fit Outdoor Wheel Kit

## STEP PLATFORM LADDERS - STANDARD

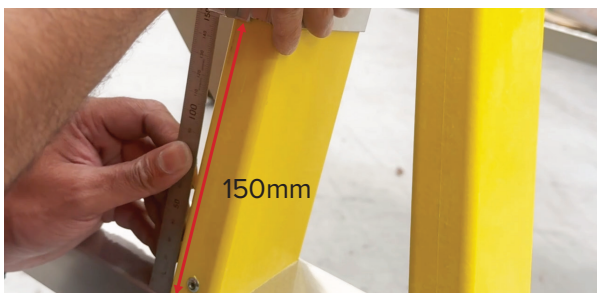
(FPL/FPW 2.1 - 3.6)



Tools required: Torque wrench, 10mm socket

### Installing Brackets on the Rear Section of the Platform

- **Align the Bracket:** Position the bracket on the inside of the stile and measure 150mm.



- **Place the Stile Connector Plate:** Set the stile connector plate on top of the wheel mount bracket, ensuring the single slot on the bracket faces upward.



## Retro Fit Outdoor Wheel Kit

### STEP PLATFORM LADDERS - STANDARD

(FPL/FPW 2.1 - 3.6)

- **Prepare the U-Bolts:** Remove the two nuts from each U-bolt to prepare them for installation.
- **Insert the U-Bolts:** Push a U-bolt through the back of the bracket, ensuring it passes all the way through.



- **Secure with Nuts:** Wind the nuts onto the U-bolt and tighten them using torque wrench 9Nm to secure the bracket in place.



- **Check Alignment:** Ensure the bracket is flush with the stile connector, with no gaps visible.
- **Final Tightening:** Tighten the nuts completely to secure the bracket in place.
- **Repeat on the Opposite Side:** Follow the same steps to install the bracket on the other side of the platform.

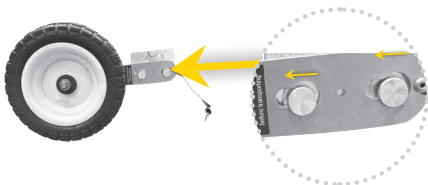
# Retro Fit Outdoor Wheel Kit

## STEP PLATFORM LADDERS - STANDARD

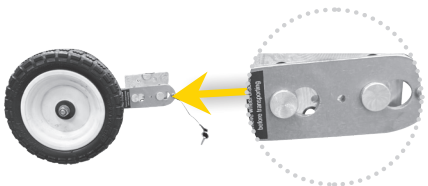
(FPL/FPW 2.1 - 3.6)

### Mounting the wheel to the ladder

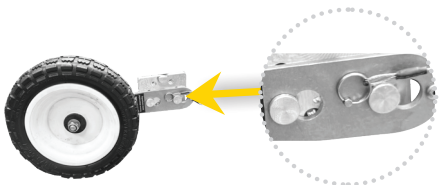
- Place the wheel bracket within the two slots.



- Slide it all the way in until it sits flush on the narrow slots.



- Insert the dent pin to lock it into position.



### Usage/Application



### Storage

- No storage feature available.
- Please detach the wheels for storage.

**Warning:** Remove the wheel assembly before transporting,

# Retro Fit Outdoor Wheel Kit

## STEP PLATFORM LADDERS

### WITH ALL TERRAIN



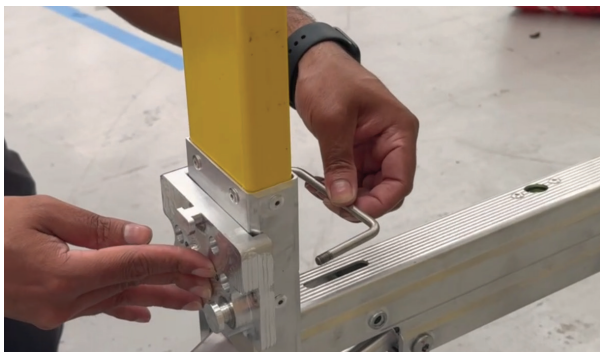
Tools required: Torque wrench, 10mm socket

#### Installing Brackets on the Rear Section of the Platform

- **Align the Bracket:** Position the bracket on the rear section of the platform, ensuring the two slots on the wheel mount bracket align with the two rivets.



- **Prepare the U-Bolts:** Remove the two nuts from each U-bolt to prepare them for installation.
- **Insert the U-Bolts:** Push a U-bolt through the back of the bracket, ensuring it passes all the way through.



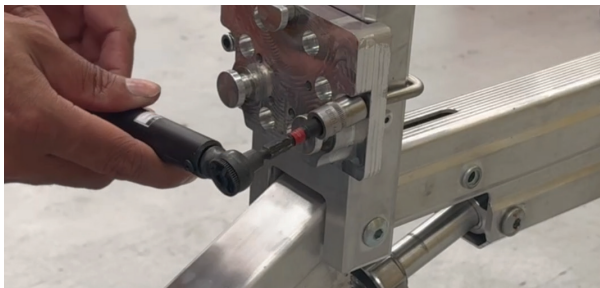


## Retro Fit Outdoor Wheel Kit

### STEP PLATFORM LADDERS

### WITH ALL TERRAIN

- **Secure with Nuts:** Wind the nuts onto the U-bolt and tighten them using torque wrench 9Nm to secure the bracket in place.



- **Check Alignment:** Ensure the bracket is flush with the stile connector, with no gaps visible.
- **Final Tightening:** Tighten the nuts completely to secure the bracket in place.
- **Repeat on the Opposite Side:** Follow the same steps to install the bracket on the other side of the platform.

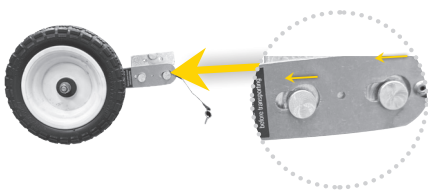
# Retro Fit Outdoor Wheel Kit

## STEP PLATFORM LADDERS

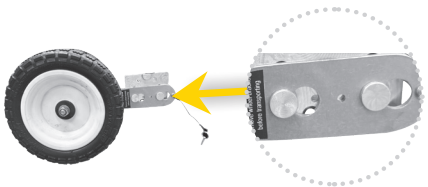
### WITH ALL TERRAIN

#### Mounting the wheel to the ladder

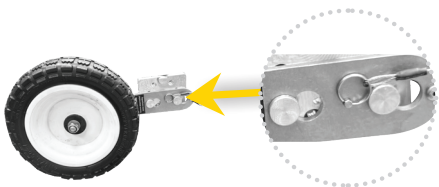
- Place the wheel bracket within the two slots.



- Slide it all the way in until it sits flush on the narrow slots.



- Insert the dent pin to lock it into position.



#### Usage/Application



#### Storage

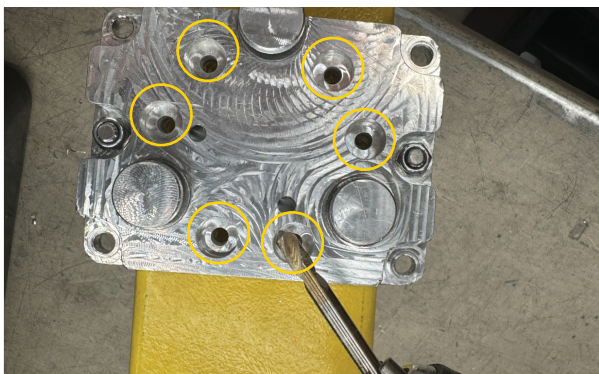


**Warning:** Remove the wheel assembly before transporting,

## Optional:

For added security, the wheel mount bracket can be secured to the stiles using rivets provided. This provides a stronger and more durable attachment compared to just screwing it in directly.

- Adjust the brackets to the desired position by referring to setup on pages 1-17, ensuring the inclusion of the U-bolts.
- Use a 5mm drill bit to drill through the six counterbore holes as shown.



- Insert the rivets into the drilled holes. Fasten by pulling on all 10 rivets until firmly secured.



- Rivet on the opposite side.



## MANUFACTURED BY

### **Branach Manufacturing Pty Ltd**

**a** 891 Wellington Road  
Rowville, Victoria 3175, Australia

**t** +613 9761 6633

**e** sales@branach.com

**w** branach.com

### **Branach GmbH**

**a** Im Speyerer Tal 5, Halle 4, 76761  
Rülzheim, Germany

**t** +49 1523 6750 888 (Germany)

**t** +40 743 238 006 (Romania)

**e** sales@branach.com

**w** branach.com

